

Sun Plaza ~ 10,000sf END CAP Available

Save
alot



**41,500 Cars
Per Day**



Property Features:

Center Size: 113,262sf
Site Size: 3.91 acres
Year Built: 1972 – Renovated 1994
Construction: Concrete Block
Roof Cover: Built-up over Metal Deck

Demographics - 3 mile radius

Population: 125,125
Median Age: 30.5
Household Income: \$49,787

Available Units

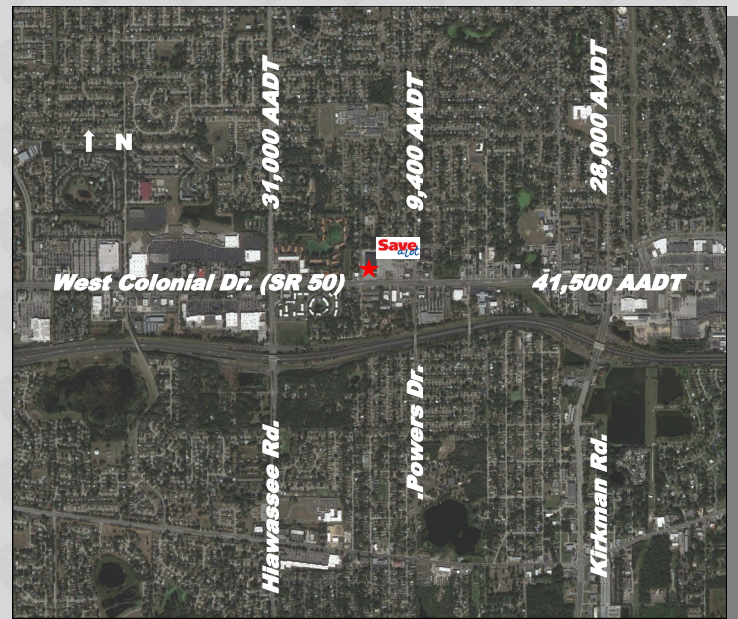
Unit 6391: 10,000sf

Rental Rates:

Base Rent: \$12/sf to \$15/sf per sf

Additional Rent (NNN) Estimated at \$3 per sf

Note: All rents subject to Sales Tax



www.RetailAssetManagementInc.com

Sun Plaza

Neighborhood Grocery Anchored Center

**6333-6395 West Colonial Dr.
Orlando, Florida 32818**

For Additional Information Contact

Retail Asset Management, Inc.

Sales • Management • Leasing • Development

Paul Cooley (727) 480-0063 ~ Wayne Purdy (727) 510-3707

pcooley@RetailAssetManagementInc.com ~ wpurdy@RetailAssetManagementInc.com

Ofc (727) 446-3032 ~ Fax (727) 446-3080

P.O. Box 5666 • Clearwater • Florida 33758-5666

The information given herewith is obtained from sources considered reliable. However we are not responsible for misstatements of facts, errors or omissions, withdrawal from market, modification of terms and conditions, or change in pricing without notice. The information supplied herein is for informational purposes only and shall not constitute a warranty or assurance that the information is correct. Any person intending to rely upon the information supplied herein should verify said information independently.

Pursuant to Section 475.25(1)(q) Florida Statutes, and Rule 21V-10.033 Florida Administrative Code, Retail Asset Management, Inc. makes the following disclosures, that in the event a lease or sales contract is entered into, Retail Asset Management, Inc. represents the Lessor/Seller exclusively and Lessee/Buyer may be responsible for additional costs, such as their own attorney's fees, security deposit, and telephone and utility deposits.